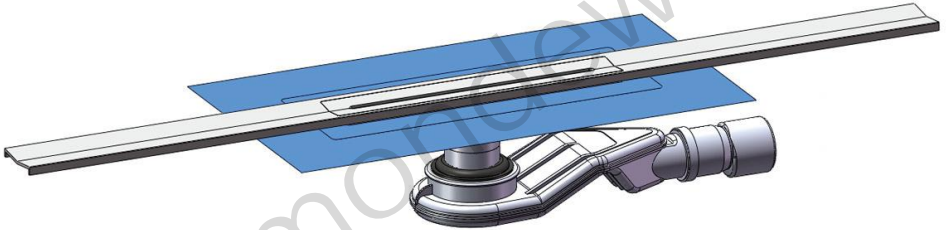


**Shower Channel with Cuttable Drain
for Bonded waterproofing**



INSTALLATION GUIDE

Component Overview

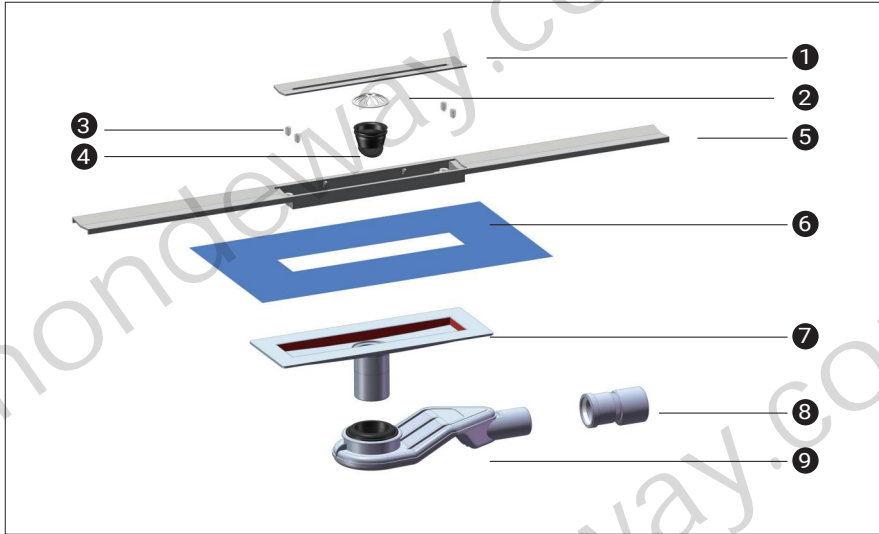


Abb. 1: Bauteile und Lieferumfang

- 1 Gird-Linear Hole(SS316)
- 2 SS304 filter
- 3 Screws-4PCS
- 4 Dry Siphon
- 5 SS316 Cuttable shower drain body
- 6 Waterproofing membrane
- 7 plastic base
- 8 40mm to 50mm Adapter-PP
- 9 360° Rotatable Wet Siphon-PP

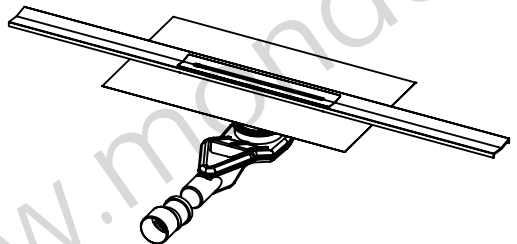
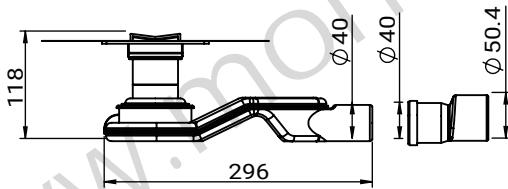
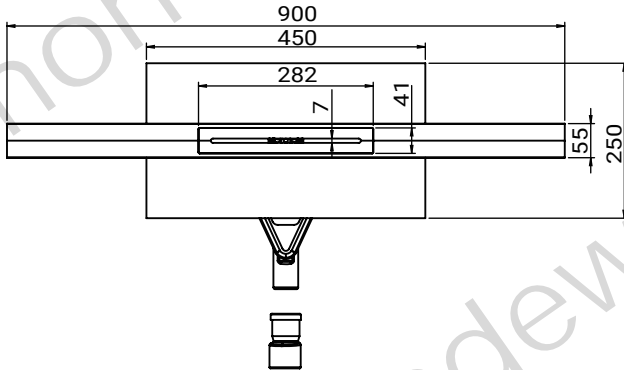
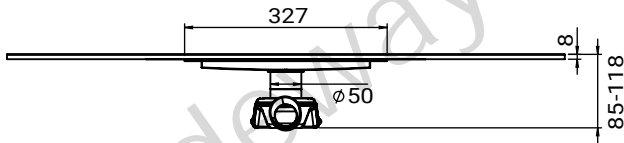
Important Notes Careful planning is required for waterproofing. A suitable bonded waterproofing system with building authority approval must be selected based on the respective moisture stress class and substrate type.

The following additional factors must also be considered:

- The drain or shower channel must be fitted with a special flange featuring an adhesive surface and a minimum width of 55 mm.
- The screed must be laid with a minimum fall of 1–2%.
- Installation must be carried out in accordance with the installation instructions and manufacturer's

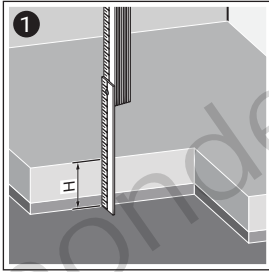
Installation dimensions

Shower channel, basic model with a base body

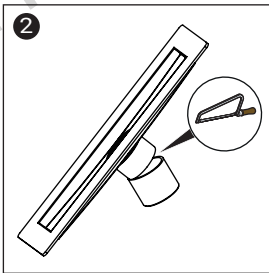


INSTALLATION INSTRUCTIONS

1. Determine installation height



- Determine the installation height H.
The installation height is 90–125mm.



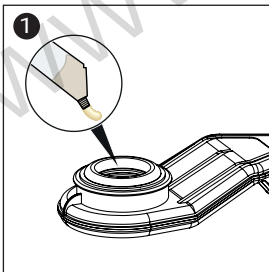
Cut the Pipe to length

- Cut the pipe to length X.
 $X = 68\text{mm} - H$ (maximum cut 40mm, see the line on pipe)
- Deburr the pipe.

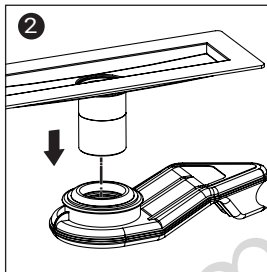


The height can be increased using a standard DN50 HT pipe.

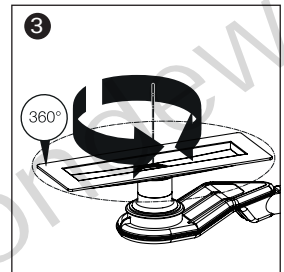
2. Mount the mounting flange



- Coat the inside of the profile seal with lubricant for plastic pipes.

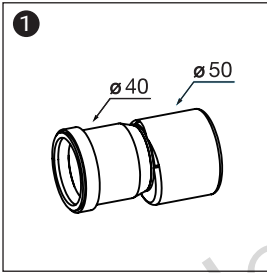


- Insert the flange into the odor trap until it stops.

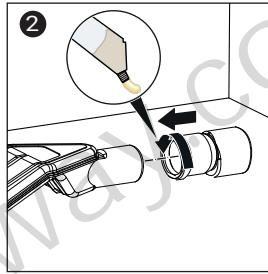


- The flange can be rotated 360°.

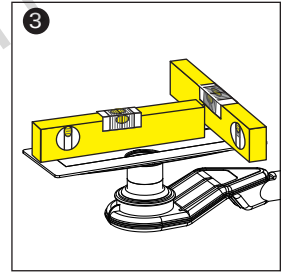
3. Align and connect



- The siphon has a 40mm diameter outlet and can be converted to a 50mm outlet using a 40/50mm adapter.

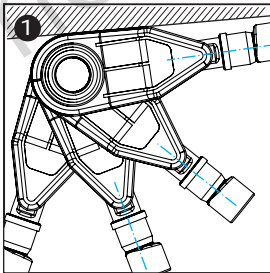


- Coat the silicone on the DN40mm 360° rotatable Siphon outlet and insert it into the 40/50mm adapter.

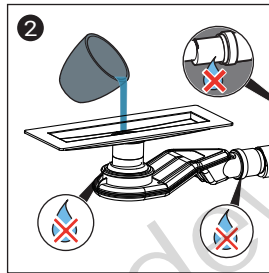


- Align and secure the flange horizontally in all directions.

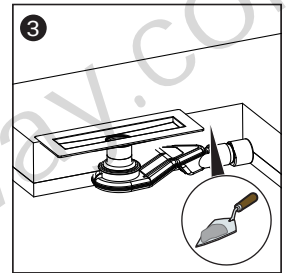
4. Wall mounting



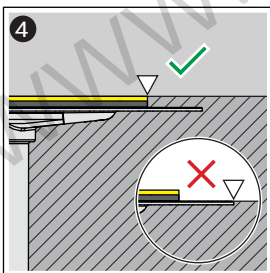
- The distances to the shower channel profile depend on the positioning of the odor trap.



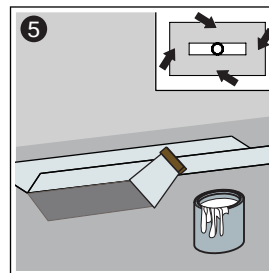
- **Check for leaks**
Underlay with screed
 - Lift the sticker.
 - Fill the drain body with water.
 - Check the drain housing and the connecting pipe for leaks.
 - Replace the sticker.



- Prerequisite:
The protective covering is installed.
Support the shower drain with screed.

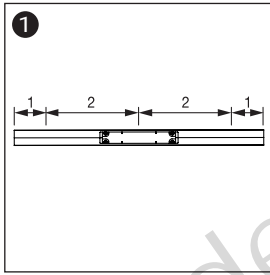


- The distances to the shower channel profile depend on the positioning of the odor trap.



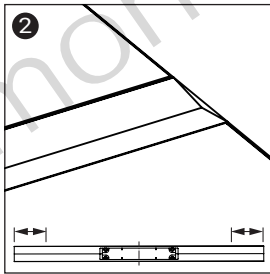
- **INFO! Observe the manufacturer's instructions for use of the bonded waterproofing membrane.**
Fold the sealing collar in half.
Apply the first layer of bonded waterproofing membrane liberally to the screed and flange.
Press the sealing collar smoothly into the still-liquid bonded waterproofing membrane.

5. Install the height adjustment piece and shower channel profile Determine the dimensions



- The shower channel profile is divided into two drainage zones.

1. Drainage zone (flat, no slope)
2. Drainage zone (with internal slope)

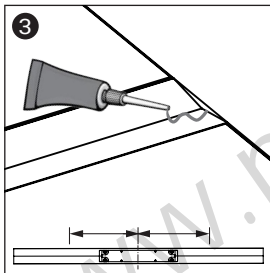


- The shower drain profile can be shortened to a minimum of 600 mm at the ends of the outlet zone.

To allow for custom profile lengths, the shower drain profile and the tiles are at the same height.

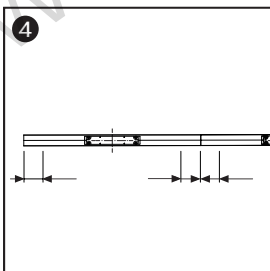
Shortening area, run-off zone

Profile length	Reduction area
800 mm	600-800mm
900 mm	600-900mm
1000 mm	600-1000mm
1200 mm	600-1200mm



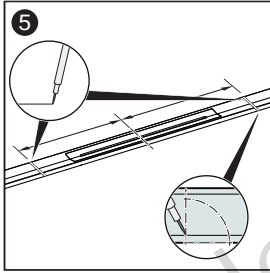
- Offset between shower channel profile and tile

If the shower channel profile and tile height do not match, the resulting offset between them can be closed with a tile trim strip or with silicone.



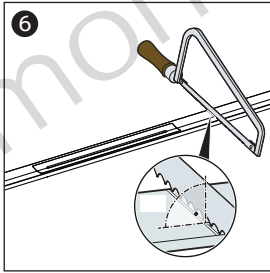
Shortening area, outlet zone for extended shower channel profiles

Profile length	Reduction area
2 X 800mm	1200-1600mm
2 X 900mm	1200-1800mm
2 X 1000mm	1200-2000mm
2 X 1200mm	1200-2400mm



► **Shortening the shower channel profile**

Determine the desired dimension and mark it at right angles.

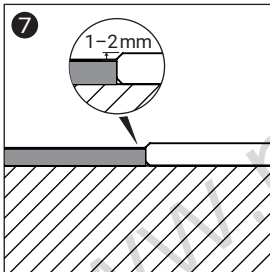


► **Cut the shower drain profile to length at a right angle using a handsaw and deburr it.**

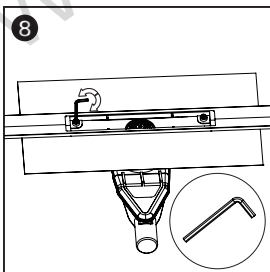
Alternatively, the shower drain profile can also be cut to length using an electric metal cutting saw or a speed-limited angle grinder with a suitable stainless steel cutting disc.



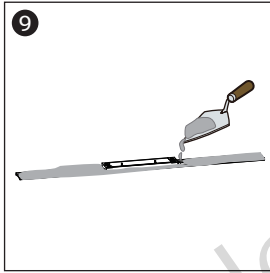
NOTE! To avoid corrosion, the tools must not have been previously used for processing ferrous materials.



► **Lay the floor covering 1–2 mm higher than the shower channel profile.**



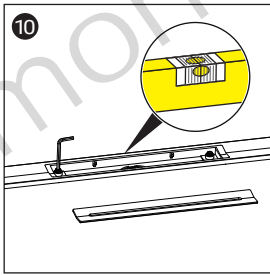
► **Use a hex wrench to adjust the channel height and accommodate different tile thicknesses.**



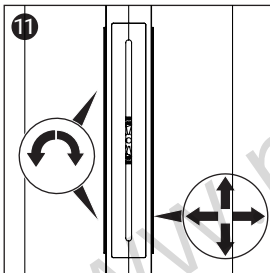
- Apply the tile adhesive evenly to the underside of the shower channel profile.



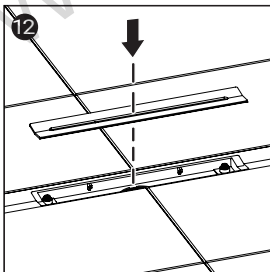
NOTE! The flexural strength of the tile adhesive must correspond to at least class S1.



- Using a level, adjust the screws with a hex wrench, then install the shower channel profile and the height adjustment piece.

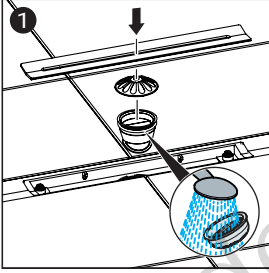


- Align the shower channel profile and the height adjustment piece horizontally.
 - The shower channel profile can be rotated radially by a maximum of 1.4mm (with a 900 mm shower channel profile).
 - The shower channel profile can be moved forward and backward 2mm along its end.

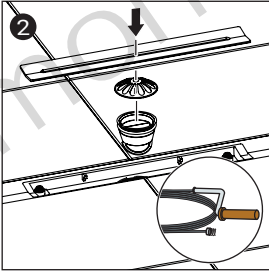


- Insert the shower drain liner.

6. Cleaning the shower drain



- Remove the shower drain liner and the strainer.
- Clean the strainer.



- Clean the odor trap.
- Reinstall the strainer and the shower drain liner.